



Nintendo 64 Controller Adapter
for Nintendo Switch, Windows



www.mayflash.com

Instruction Manual

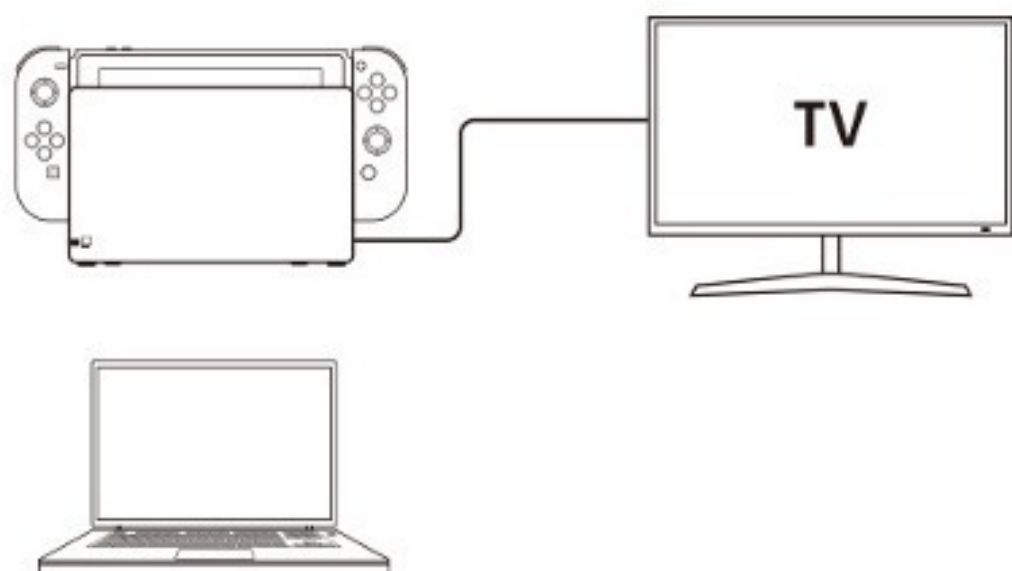


Connect up to two Nintendo 64 Controllers to your Nintendo Switch, Windows system.

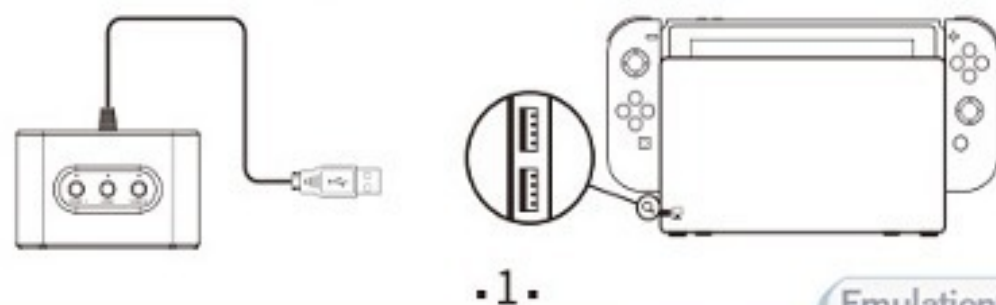
If you find any issues or have any difficulty operating the device, please reach out to us at info@mayflash.com and we will be more than happy to help you out.

Quick Start Guide

1. Connect your Nintendo Switch console to a television and turn it on. Just turn on your computer if you use it on your PC windows system.

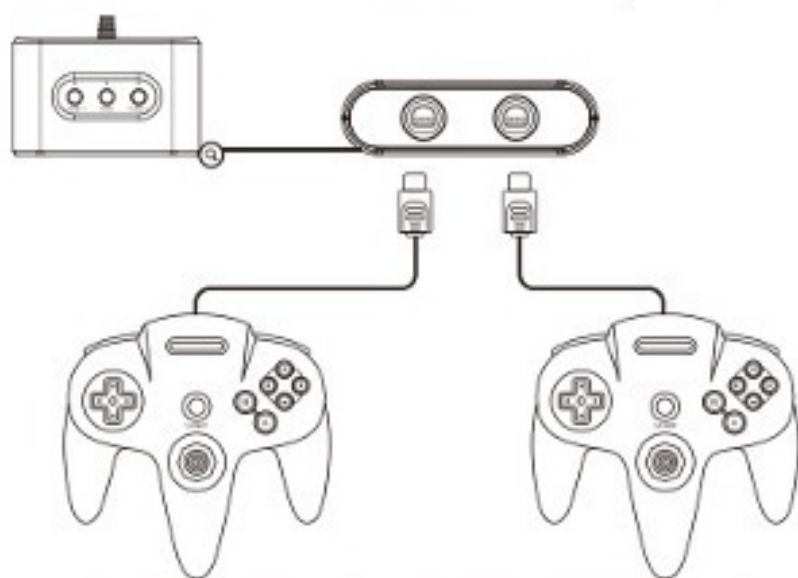


2. Connect the adapter to the console.





3. Connect the controllers to the adapter.



4. To switch the console modes, press and hold the HOME button on your adapter.



5. Your controllers are ready to use now.



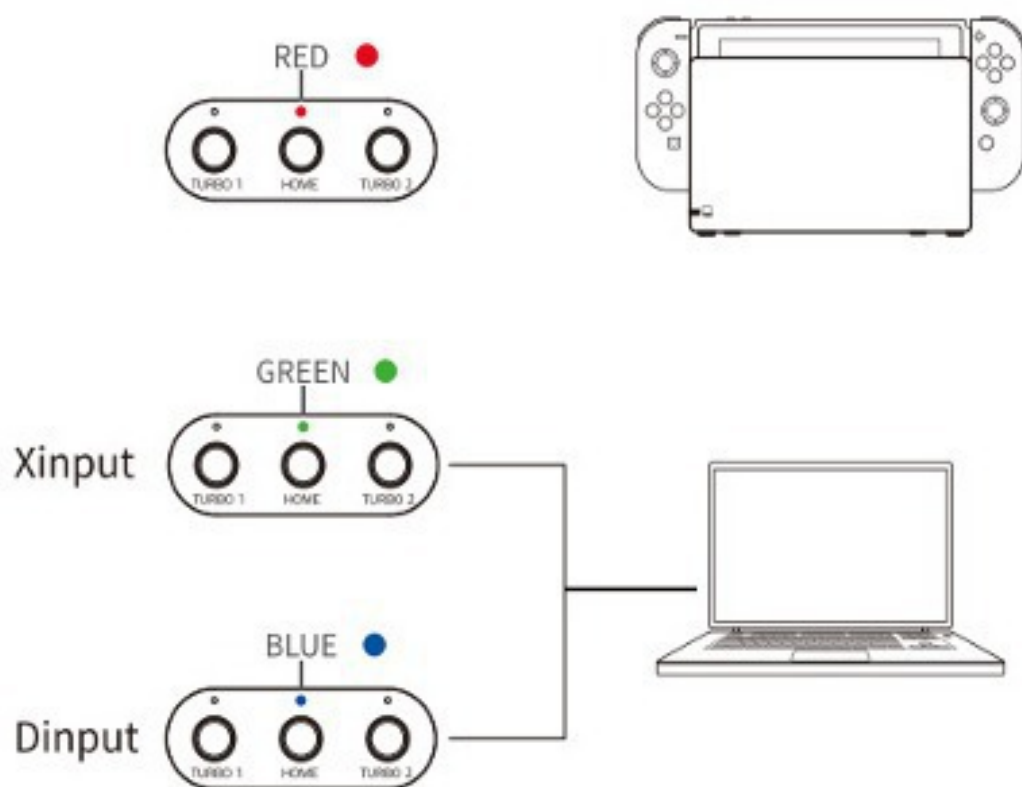
LED Indicators for the HOME Button

LED Indicator in Red: Nintendo Switch Mode

LED Indicator in Green: PC Xinput Mode

LED Indicator in Blue: PC Dinput Mode

To switch the console modes, press and hold the HOME button on your adapter.



Turbo/Auto Fire/Hold Function

Player 1: TURBO 1

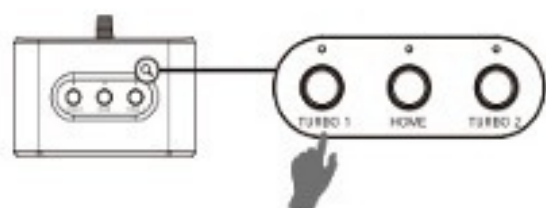
Player 2: TURBO 2

You can set the Turbo/Auto Fire/Hold for the player 1 and player 2 separately.



Quick Start

1. To set Turbo for individual buttons, press and hold the TURBO 1(or TURBO2) button and the button you wish to set Turbo for
2. Repeat the above operation to set the Auto Fire for this button.
3. Repeat the above operation again to set the Hold for this button.



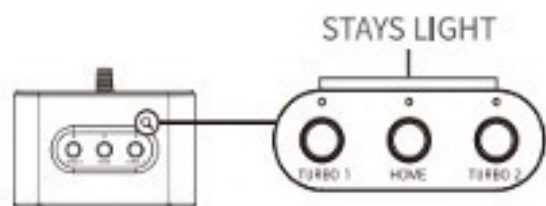
4. Do it again to cancel the Turbo, Auto Fire or Hold function for this button.
5. To clear all Turbo settings for all buttons, quickly press the TURBO 1 (or TURBO 2) button twice.

LED Indicators for the TURBO 1 and TURBO 2

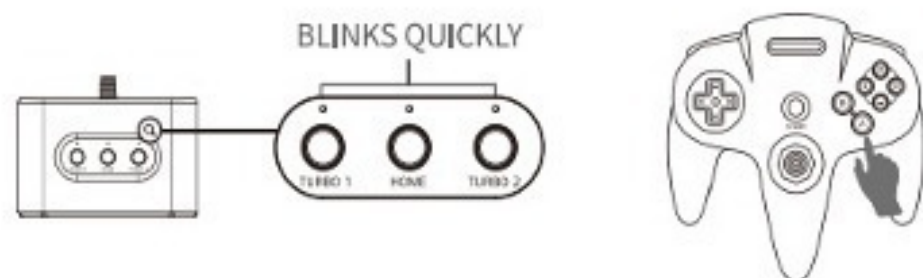
Player 1: TURBO 1

Player 2: TURBO 2

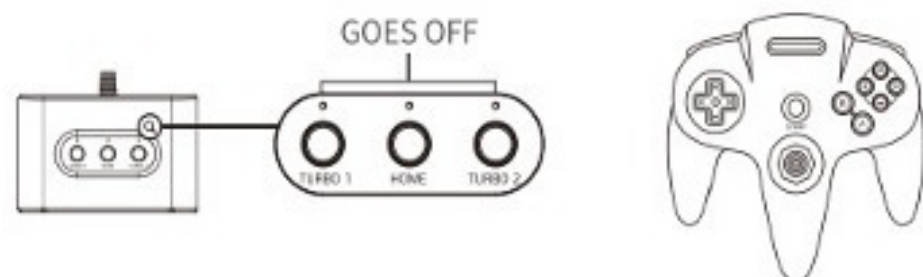
LED Indicator stays light: One button or some buttons have been set for Turbo, Auto Fire or Hold.



LED Indicator blinks quickly: The buttons set for Turbo, Auto Fire or Hold are in use.



LED Indicator goes off: No any buttons are set for Turbo, Auto Fire or Hold.



Switch the Left Stick and D-Pad

1. To switch the D-Pad to the left stick, press and hold the button "START" and "A" for 3 seconds.
2. To switch back the D-Pad, press and hold the button "START" and "B" for 3 seconds.
3. The changes will be saved automatically. If you change it for the player 1, the player 2 will have the same setting.



Controllers Buttons Table

*The HOME button on the adapter works for the Player 1 only

Switch	B	A	Y	X	L	R	-	+	L3	R3	LS	RS	POV	ZL	ZR	HOME
PC-Xinput	②	①	④	③	⑤	⑥	⑦	⑧	⑨	⑩	X/Y Axis	X/Y Circle	POV	Z-	Z+	HOME
PC-Dinput	②	③	①	④	⑤	⑥	⑨	⑩	⑪	⑫	X/Y Axis	Z Axis Circle	POV	⑦	⑧	⑬
Nintendo 64 Controller	A	B			L	R		START			LS	C-TICK	POV	Z		

Update the Software

If you are having problems with the adapter, you can follow the below instructions to update.

1. Download the software from <http://www.mayflash.com/Support/Download/> and install it on your Windows system.
2. Double click on the updater and leave the updater window open on your screen.
3. Press and hold the HOME button on the adapter, and connect the USB from your adapter into any spare port on your PC.
4. As soon as the driver window indicates under "Device" that the adapter has been recognized, you may release the button.
5. Select "Update".
6. Does not disconnect the device until you are informed that the update is completed successfully.

